

# TEST REPORT

Report No.: **SZ1230417-19975E**

Date: June 29, 2023

Page 1 of 28

**Shenzhen Huafurui Technology Co., Ltd**

**Unit 1401 & 1402, 14/F, Jinqi Zhigu Mansion (No.4 Building of Chongwen Garden), Crossing of the Liuxian Street and Tangling Road, Taoyuan Street, Nanshan District, Shenzhen, P.R. China**

Report on the submitted samples said to be:

Sample Description:	Smart phone
Style/Item No.:	KINGKONG STAR
Country of Origin:	China
Brand	CUBOT
Sample Receiving Date:	April 19,2023
Testing Period:	April 19,2023 - April 29,2023
Result:	<b>Please refer to next page(s).</b>

Signed for and on behalf of

BACL

*Queenie Lee*

Checked by: \_\_\_\_\_  
Queenie Lee

*Len Xie*

Approved by: \_\_\_\_\_  
Len Xie



# TEST REPORT

Report No.: SZ1230417-19975E

Date: June 29, 2023

Page 2 of 28

\*\*\*\*\*

Summary of Test Result:

**TEST REQUEST**

**CONCLUSION**

A RoHS Directive 2011/65/EU and amendment directives (EU) 2015/863 on Lead,Cadmium, Mercury, Hexavalent Chromium, PBBs & PBDEs, Phthalates(DBP, BBP,DEHP, DIBP) content

A.1 XRF screening test

Pass

A.2 Wet Chemical Testing

A.2.1 PBBs & PBDEs content

Pass

A.3 Phthalates(DBP, BBP, DEHP, DIBP)content

Pass

\*\*\*\*\*

# TEST REPORT

Report No.: SZ1230417-19975E

Date: June 29, 2023

Page 3 of 28

**A RoHS Directive 2011/65/EU and amendment directives (EU) 2015/863 on Lead, Cadmium, Mercury, Hexavalent Chromium, PBBs & PBDEs, Phthalates (DBP, BBP, DEHP, DIBP) content**

**A.1 XRF screening test**

Test method: IEC 62321-3-1:2013

Seq No.	Tested Part(s)	Result				
		Pb	Cd	Hg	Cr	Br
(1)*1	Silvery metal (pin, adapter)	OL (18662)	BL	BL	BL	---
(2)*	White plastic (cover, adapter)	BL	BL	BL	BL	X
(3)	Grey glue (PCB, adapter)	BL	BL	BL	BL	BL
(4)	Silvery metal (base, PCB, adapter)	BL	BL	BL	BL	---
(5)	Black plastic (insulation strip, PCB, adapter)	BL	BL	BL	BL	BL
(6)	Transparent soft plastic (double faced adhesive tape, PCB, adapter)	BL	BL	BL	BL	BL
(7)	White printed brown body (capacitor "C1", PCB, adapter)	BL	BL	BL	BL	BL
(8)	White printed black body (capacitor "C3", PCB, adapter)	BL	BL	BL	BL	BL
(9)	Red printed silvery body (capacitor "C11", PCB, adapter)	BL	BL	BL	BL	BL
(10)	Blue body (capacitor "CY1", PCB, adapter)	BL	BL	BL	BL	BL
(11)	Yellow body (capacitor "CX1", PCB, adapter)	BL	BL	BL	BL	BL
(12)	White printed black body (NTC1, PCB, adapter)	BL	BL	BL	BL	BL
(13)	Brown body (fuse "F1", PCB, adapter)	BL	BL	BL	BL	BL
(14)	Black body (inductor "L1", PCB, adapter)	BL	BL	BL	BL	BL
(15)	Black printed transparent plastic with adhesive (label, transformer, PCB, adapter)	BL	BL	BL	BL	BL
(16)	Yellow/black body (transformer, PCB, adapter)	BL	BL	BL	BL	BL
(17)	Black body (triode "Q1", PCB, adapter)	BL	BL	BL	BL	BL
(18)	Black body (big IC, PCB, adapter)	BL	BL	BL	BL	BL
(19)	Black body (middle IC, PCB, adapter)	BL	BL	BL	BL	BL
(20)	Black body (small IC, PCB, adapter)	BL	BL	BL	BL	BL
(21)	Black body (SMD diode, PCB, adapter)	BL	BL	BL	BL	BL
(22)	Brown body (SMD capacitor, PCB, adapter)	BL	BL	BL	BL	BL
(23)	Black/white body (SMD resistor, PCB, adapter)	BL	BL	BL	BL	BL
(24)*	White printed green coated brown plastic with coppery metal (PCB, adapter)	BL	BL	BL	BL	X
(25)	Silvery solder (PCB, adapter)	BL	BL	BL	BL	---
(26)	Silvery metal (contact plate, PCB, adapter)	BL	BL	BL	BL	---

# TEST REPORT

Report No.: **SZ1230417-19975E**

Date: June 29, 2023

Page 4 of 28

Seq No.	Tested Part(s)	Result				
		Pb	Cd	Hg	Cr	Br
(27)	Silvery metal (cover, USB connector, small PCB, adapter)	BL	BL	BL	BL	---
(28)	Grey plastic (insert core, USB connector, small PCB, adapter)	BL	BL	BL	BL	BL
(29)	Silvery/golden metal (pin, USB connector, small PCB, adapter)	BL	BL	BL	BL	---
(30)	Black body (IC, small PCB, adapter)	BL	BL	BL	BL	BL
(31)	Brown body (SMD capacitor, small PCB, adapter)	BL	BL	BL	BL	BL
(32)	Black/white body (SMD resistor, small PCB, adapter)	BL	BL	BL	BL	BL
(33)*	White printed green coated brown plastic with coppery metal (small PCB, adapter)	BL	BL	BL	BL	X
(34)	Silvery solder (small PCB, adapter)	BL	BL	BL	BL	---
(35)	White PVC (cover, plug, USB cable)	BL	BL	BL	BL	BL
(36)	White PVC (main wire jacket, plug, USB cable)	BL	BL	BL	BL	BL
(37)	Silvery metal (cover, plug, USB cable)	BL	BL	BL	BL	---
(38)	Silvery metal (holder, plug, USB cable)	BL	BL	BL	BL	---
(39)	Silvery/golden metal (pin, plug, USB cable)	BL	BL	BL	BL	---
(40)	Grey plastic (insert core, plug, USB cable)	BL	BL	BL	BL	BL
(41)	White plastic (cover, plug, USB cable)	BL	BL	BL	BL	BL
(42)	Brown body (SMD capacitor, PCB, USB cable)	BL	BL	BL	BL	BL
(43)*	White printed green coated brown plastic with coppery metal (PCB, USB cable)	BL	BL	BL	BL	X
(44)	Silvery solder (PCB, USB cable)	BL	BL	BL	BL	---
(45)	Yellow PVC (wire jacket, USB cable)	BL	BL	BL	BL	BL
(46)	Green PVC (wire jacket, USB cable)	BL	BL	BL	BL	BL
(47)	White PVC (wire jacket, USB cable)	BL	BL	BL	BL	BL
(48)	Black soft plastic (wire jacket, USB cable)	BL	BL	BL	BL	BL
(49)	Red soft plastic (wire jacket, USB cable)	BL	BL	BL	BL	BL
(50)	Coppery metal (wire, USB cable)	BL	BL	BL	BL	---
(51)	Black printed white plastic (cover, earphone)	BL	BL	BL	BL	BL
(52)	Jasper fabric (mesh, earphone)	BL	BL	BL	BL	BL
(53)	White glue (speaker, earphone)	BL	BL	BL	BL	BL
(54)	Red glue (speaker, earphone)	BL	BL	BL	BL	BL
(55)	White felt with adhesive (pad, speaker, earphone)	BL	BL	BL	BL	BL
(56)*	Green coated brown plastic with coppery metal (PCB, speaker, earphone)	BL	BL	BL	BL	X

# TEST REPORT

Report No.: SZ1230417-19975E

Date: June 29, 2023

Page 5 of 28

Seq No.	Tested Part(s)	Result				
		Pb	Cd	Hg	Cr	Br
(57)	Silvery solder (PCB, speaker, earphone)	BL	BL	BL	BL	---
(58)	Silvery body (speaker, earphone)	BL	BL	BL	BL	BL
(59)	White soft plastic (holder, earphone)	BL	BL	BL	BL	BL
(60)	White soft plastic (wire jacket, earphone)	BL	BL	BL	BL	BL
(61)	Coppery enamelled wire (wire, earphone)	BL	BL	BL	BL	BL
(62)	Dark blue enamelled wire (wire, earphone)	BL	BL	BL	BL	BL
(63)	Red enamelled wire (wire, earphone)	BL	BL	BL	BL	BL
(64)	Black printed white plastic (cover, controller, earphone)	BL	BL	BL	BL	BL
(65)	Silvery body (SMD microphone, PCB, controller, earphone)	BL	BL	BL	BL	BL
(66)	Silvery metal (disc, PCB, controller, earphone)	BL	BL	BL	BL	---
(67)*	White printed dark blue coated brown plastic with coppery metal (PCB, controller, earphone)	BL	BL	BL	BL	X
(68)	Silvery solder (PCB, controller, earphone)	BL	BL	BL	BL	---
(69)	White plastic (cover, USB plug, earphone)	BL	BL	BL	BL	BL
(70)	Silvery metal (cover, USB plug, earphone)	BL	BL	BL	BL	---
(71)	Black plastic (insert core, USB plug, earphone)	BL	BL	BL	BL	BL
(72)	Silvery metal (holder, USB plug, earphone)	BL	BL	BL	BL	---
(73)	Silvery/golden metal (pin, USB plug, earphone)	BL	BL	BL	BL	---
(74)*	White printed dark blue coated brown plastic with coppery metal (PCB, USB plug, earphone)	BL	BL	BL	BL	X
(75)	Silvery solder (PCB, USB plug, earphone)	BL	BL	BL	BL	---
(76)	Black printed white plastic with adhesive (label, smart phone)	BL	BL	BL	BL	BL
(77)	Black soft plastic (cover, smart phone)	BL	BL	BL	BL	BL
(78)	Dark golden metal (cover/button, smart phone)	BL	BL	BL	BL	---
(79)	Black printed transparent glass (rear cover, smart phone)	BL	BL	BL	BL	BL
(80)	Dark golden printed black plastic (cover, smart phone)	BL	BL	BL	BL	BL
(81)	Dark golden plated silvery metal (screw, smart phone)	BL	BL	BL	BL	---
(82)	Black soft plastic (pad, button, smart phone)	BL	BL	BL	BL	BL
(83)	Silvery metal (base, button, smart phone)	BL	BL	BL	BL	---
(84)	Black plastic with coppery metal (FPC, button, smart phone)	BL	BL	BL	BL	BL
(85)*1	Golden metal (nut, smart phone)	OL (27959)	BL	BL	BL	---

# TEST REPORT

Report No.: **SZ1230417-19975E**

Date: June 29, 2023

Page 6 of 28

Seq No.	Tested Part(s)	Result				
		Pb	Cd	Hg	Cr	Br
(86)	Black plated silvery metal (screw, smart phone)	BL	BL	BL	BL	---
(87)	Silvery metal (screw, smart phone)	BL	BL	BL	BL	---
(88)	Dark silvery metal (frame, smart phone)	BL	BL	BL	BL	---
(89)	Silvery fabric with adhesive (pad, smart phone)	BL	BL	BL	BL	BL
(90)	Black soft plastic with adhesive (pad, smart phone)	BL	BL	BL	BL	BL
(91)	Coppery metal with adhesive (foil, smart phone)	BL	BL	BL	BL	---
(92)	Golden metal (cover, connector, FPC, smart phone)	BL	BL	BL	BL	---
(93)	Black plastic (cover, connector, FPC, smart phone)	BL	BL	BL	BL	BL
(94)*	White printed black plastic with coppery metal (FPC, smart phone)	BL	BL	BL	BL	X
(95)	Golden metal (cover, plug, antenna, smart phone)	BL	BL	BL	BL	---
(96)	Golden metal (pin, plug, antenna, smart phone)	BL	BL	BL	BL	---
(97)	Black plastic (frame, plug, antenna, smart phone)	BL	BL	BL	BL	BL
(98)	Black soft plastic (wire jacket, antenna, smart phone)	BL	BL	BL	BL	BL
(99)	Transparent soft plastic (wire jacket, antenna, smart phone)	BL	BL	BL	BL	BL
(100)	Silvery metal (wire, antenna, smart phone)	BL	BL	BL	BL	---
(101)	Silvery metal (sleeve, wire, antenna, smart phone)	BL	BL	BL	BL	---
(102)	Beige fabric with adhesive (pad, motor, smart phone)	BL	BL	BL	BL	BL
(103)	Black soft plastic with adhesive (pad, motor, smart phone)	BL	BL	BL	BL	BL
(104)	Silvery body (motor, smart phone)	BL	BL	BL	BL	BL
(105)	Blue soft plastic (wire jacket, motor, smart phone)	BL	BL	BL	BL	BL
(106)	Red soft plastic (wire jacket, motor, smart phone)	BL	BL	BL	BL	BL
(107)	Silvery metal (wire, motor, smart phone)	BL	BL	BL	BL	---
(108)	Black felt with adhesive (pad, SMD microphone, smart phone)	BL	BL	BL	BL	BL
(109)	Black soft plastic (cover, SMD microphone, smart phone)	BL	BL	BL	BL	BL
(110)	Silvery body (SMD microphone, smart phone)	BL	BL	BL	BL	BL
(111)*	White printed brown plastic with coppery metal (FPC, SMD microphone, smart phone)	BL	BL	BL	BL	X
(112)	Silvery body (USB connector, small PCB, smart phone)	BL	BL	BL	BL	BL
(113)	Black body (MIC connector, small PCB, smart phone)	BL	BL	BL	BL	BL
(114)	Black/white body (FPC connector, small PCB, smart phone)	BL	BL	BL	BL	BL
(115)	Silvery metal (contact plate, small PCB, smart phone)	BL	BL	BL	BL	---

# TEST REPORT

Report No.: **SZ1230417-19975E**

Date: June 29, 2023

Page 7 of 28

Seq No.	Tested Part(s)	Result				
		Pb	Cd	Hg	Cr	Br
(116)	Golden body (antenna connector, small PCB, smart phone)	BL	BL	BL	BL	BL
(117)	Silvery/golden metal (contact plate, small PCB, smart phone)	BL	BL	BL	BL	---
(118)	Black body (IC, small PCB, smart phone)	BL	BL	BL	BL	BL
(119)	Brown body (SMD capacitor, small PCB, smart phone)	BL	BL	BL	BL	BL
(120)	Black/white body (SMD resistor, small PCB, smart phone)	BL	BL	BL	BL	BL
(121)*	White printed black coated brown plastic with coppery metal (small PCB, smart phone)	BL	BL	BL	BL	X
(122)	Silvery solder (small PCB, smart phone)	BL	BL	BL	BL	---
(123)	Black body (camera"A072", smart phone)	BL	BL	BL	BL	BL
(124)	Silvery body (camera"B344", smart phone)	BL	BL	BL	BL	BL
(125)	Silvery body (camera"B336", smart phone)	BL	BL	BL	BL	BL
(126)	Silvery body (camera"A069", smart phone)	BL	BL	BL	BL	BL
(127)	Silvery body (speaker, smart phone)	BL	BL	BL	BL	BL
(128)	Black soft plastic (wire jacket, speaker, smart phone)	BL	BL	BL	BL	BL
(129)	Red soft plastic (wire jacket, speaker, smart phone)	BL	BL	BL	BL	BL
(130)	Silvery metal (wire, speaker, smart phone)	BL	BL	BL	BL	---
(131)	Black printed silvery metal (cover, screen, smart phone)	BL	BL	BL	BL	BL
(132)	Silvery fabric with adhesive (pad, screen, smart phone)	BL	BL	BL	BL	BL
(133)	Silvery foam with adhesive (pad, screen, smart phone)	BL	BL	BL	BL	BL
(134)	Transparent plastic (film, screen, smart phone)	BL	BL	BL	BL	BL
(135)	Translucent plastic (film, screen, smart phone)	BL	BL	BL	BL	BL
(136)	Silvery plastic (film, screen, smart phone)	BL	BL	BL	BL	BL
(137)	White plastic (film, screen, smart phone)	BL	BL	BL	BL	BL
(138)	Silvery/translucent plastic (film, screen, smart phone)	BL	BL	BL	BL	BL
(139)	Black printed transparent glass (screen, smart phone)	BL	BL	BL	BL	BL
(140)	White body (LED, small FPC, screen, smart phone)	BL	BL	BL	BL	BL
(141)*	White printed brown plastic with coppery metal (small FPC, screen, smart phone)	BL	BL	BL	BL	X
(142)	Grey soft plastic (pad, main PCB, smart phone)	BL	BL	BL	BL	BL
(143)	Black printed white paper with adhesive (label, main PCB, smart phone)	BL	BL	BL	BL	BL
(144)	Silvery metal (shield cover, main PCB, smart phone)	BL	BL	BL	BL	---
(145)	Silvery body (card slot, main PCB, smart phone)	BL	BL	BL	BL	BL

# TEST REPORT

Report No.: **SZ1230417-19975E**

Date: June 29, 2023

Page 8 of 28

Seq No.	Tested Part(s)	Result				
		Pb	Cd	Hg	Cr	Br
(146)	Black body (FPC connector, main PCB, smart phone)	BL	BL	BL	BL	BL
(147)	Black body (big IC, main PCB, smart phone)	BL	BL	BL	BL	BL
(148)	Black body (middle IC, main PCB, smart phone)	BL	BL	BL	BL	BL
(149)	Black body (small IC, main PCB, smart phone)	BL	BL	BL	BL	BL
(150)	Brown body (SMD capacitor, main PCB, smart phone)	BL	BL	BL	BL	BL
(151)	Black/white body (SMD resistor, main PCB, smart phone)	BL	BL	BL	BL	BL
(152)	White printed black coated brown plastic with coppery metal (main PCB, smart phone)	BL	BL	BL	BL	BL
(153)	Silvery solder (main PCB, smart phone)	BL	BL	BL	BL	---
(154)	Black soft plastic with adhesive (tape, battery, smart phone)	BL	BL	BL	BL	BL
(155)	Black soft plastic with adhesive (pad, battery, smart phone)	BL	BL	BL	BL	BL
(156)	Jasper paper with adhesive (pad, battery, smart phone)	BL	BL	BL	BL	BL
(157)	Transparent plastic with adhesive (tape, battery, smart phone)	BL	BL	BL	BL	BL
(158)	Silvery metal (contact plate, PCB, battery, smart phone)	BL	BL	BL	BL	---
(159)	Transparent blue glue (PCB, battery, smart phone)	BL	BL	BL	BL	BL
(160)	Black body (big IC, PCB, battery, smart phone)	BL	BL	BL	BL	BL
(161)	Black body (small IC, PCB, battery, smart phone)	BL	BL	BL	BL	BL
(162)	Brown body (SMD capacitor, PCB, battery, smart phone)	BL	BL	BL	BL	BL
(163)	Black/white body (SMD resistor, PCB, battery, smart phone)	BL	BL	BL	BL	BL
(164)*	White printed black coated brown plastic with coppery metal (PCB, battery, smart phone)	BL	BL	BL	BL	X
(165)	Silvery solder (PCB, battery, smart phone)	BL	BL	BL	BL	---
(166)	Golden metal (rivet, smart phone)	BL	BL	BL	BL	---
(167)	Transparent plastic (cover, LED, smart phone)	BL	BL	BL	BL	BL
(168)	Black plated silvery metal (mesh, smart phone)	BL	BL	BL	BL	---
(169)	Transparent/white body (LED, smart phone)	BL	BL	BL	BL	BL
(170)	Yellow body (LED, smart phone)	BL	BL	BL	BL	BL
(171)*	White printed brown plastic with coppery metal (LED FPC, smart phone)	BL	BL	BL	BL	X
(172)	Silvery metal (base, LED FPC, smart phone)	BL	BL	BL	BL	---
(173)	Black soft plastic with adhesive (tape, small screen, smart phone)	BL	BL	BL	BL	BL
(174)	Black printed silvery metal (cover, small screen, smart phone)	BL	BL	BL	BL	BL
(175)	White plastic (film, small screen, smart phone)	BL	BL	BL	BL	BL



# TEST REPORT

Report No.: **SZ1230417-19975E**

Date: June 29, 2023

Page 9 of 28

Seq No.	Tested Part(s)	Result				
		Pb	Cd	Hg	Cr	Br
(176)	Transparent plastic (film, small screen, smart phone)	BL	BL	BL	BL	BL
(177)	Silvery plastic (film, small screen, smart phone)	BL	BL	BL	BL	BL
(178)	Dark silvery printed transparent glass (small screen, smart phone)	BL	BL	BL	BL	BL
(179)*	White printed black plastic with coppery metal (FPC, small screen, smart phone)	BL	BL	BL	BL	X
(180)	Silvery metal (base, FPC, small screen, smart phone)	BL	BL	BL	BL	---
(181)	Transparent brown plastic with adhesive (tape, small FPC, small screen, smart phone)	BL	BL	BL	BL	BL
(182)	Black body (IC, small FPC, small screen, smart phone)	BL	BL	BL	BL	BL
(183)*	White printed brown plastic with coppery metal (small FPC, small screen, smart phone)	BL	BL	BL	BL	X

Note:

--- = Not Applicable.

\* = Screening by XRF and detected by chemical method. The test result of chemical method please refer to next pages.

\*1 = As claimed by the material declaration submitted by the client, the materials of the sample No. 1,85 are copper alloy. And according to RoHS directive 2011/65/EU and its amendments, Lead is exempted as an alloying element in Copper containing up to 4% (40000ppm) by weight.

# TEST REPORT

Report No.: **SZ1230417-19975E**

Date: June 29, 2023

Page 10 of 28

Remark:

i Result were obtained by XRF for primary screening, and further chemical testing by ICP (for Cd, Pb, Hg), UV-Vis (for Cr(VI)) and GC-MS (for PBBs, PBDEs) are recommended to be performed, if the concentration exceeds the below warning value according to IEC62321-3-1:2013.

Element	Unit	Polymers	Metal	Composite Material
Cd	mg/kg	BL≤70-3σ<X <130+3σ≤OL	BL≤70-3σ<X <130+3σ≤OL	BL≤50-3σ<X <150+3σ≤OL
Pb	mg/kg	BL≤700-3σ<X <1300+3σ≤OL	BL≤700-3σ<X <1300+3σ≤OL	BL≤500-3σ<X <1500+3σ≤OL
Hg	mg/kg	BL≤700-3σ<X <1300+3σ≤OL	BL≤700-3σ<X <1300+3σ≤OL	BL≤500-3σ<X <1500+3σ≤OL
Cr	mg/kg	BL≤700-3σ<X	BL≤700-3σ<X	BL≤500-3σ<X
Br	mg/kg	BL≤300-3σ<X	--	BL≤250-3σ<X

Note:

BL = Below Limit

OL = Over Limit

IN / X = Inconclusive (questionable, need further chemical analysis)

ii The XRF screening test for RoHS elements – The reading may be different to the actual content in the sample be of non-uniformity composition.

iii The maximum permissible limit is quoted from the RoHS directive 2011/65/EU:

RoHS Restricted Substances	Maximum Concentration Value (mg/kg) (by weight in homogenous materials)
Cadmium (Cd)	100
Lead (Pb)	1000
Mercury (Hg)	1000
Hexavalent Chromium (Cr(VI))	1000
Polybrominated biphenyls (PBBs)	1000
Polybrominated diphenylethers (PBDEs)	1000

Disclaimers:

This XRF Screening report is for reference purposes only. The applicant shall make its/his/her own judgment as to whether the information provided in this XRF screening report is sufficient for its/his/her purposes.

The result shown in this XRF screening report will differ based on various factors, including but not limited to, the sample size, thickness, area, surface flatness, equipment parameters and matrix effect (e.g. plastic, rubber, metal, glass, ceramic etc.). Further wet chemical pre-treatment with relevant chemical equipment analysis are required to obtain quantitative data.

# TEST REPORT

Report No.: SZ1230417-19975E

Date: June 29, 2023

Page 11 of 28

## A.2 Wet Chemical Testing

### A.2.1 PBBs & PBDEs content

Test method: IEC 62321-6:2015

Item	Unit	MDL	Result						Limit
			(2)	(24)	(33)	(43)	(56)	(67)	
Monobromobiphenyl (MonoBB)	mg/kg	50	N.D.	N.D.	N.D.	N.D.	N.D.	N.D.	-
Dibromobiphenyl(DiBB)	mg/kg	50	N.D.	N.D.	N.D.	N.D.	N.D.	N.D.	-
Tribromobiphenyl(TriBB)	mg/kg	50	N.D.	N.D.	N.D.	N.D.	N.D.	N.D.	-
Tetrabromobiphenyl(TetraBB)	mg/kg	50	N.D.	N.D.	N.D.	N.D.	N.D.	N.D.	-
Pentabromobiphenyl(PentaBB)	mg/kg	50	N.D.	N.D.	N.D.	N.D.	N.D.	N.D.	-
Hexabromobiphenyl(HexaBB)	mg/kg	50	N.D.	N.D.	N.D.	N.D.	N.D.	N.D.	-
Heptabromobiphenyl (HeptaBB)	mg/kg	50	N.D.	N.D.	N.D.	N.D.	N.D.	N.D.	-
Octabromobiphenyl(OctaBB)	mg/kg	50	N.D.	N.D.	N.D.	N.D.	N.D.	N.D.	-
Nonabromobiphenyl(NonaBB)	mg/kg	50	N.D.	N.D.	N.D.	N.D.	N.D.	N.D.	-
Decabromobiphenyl(DecaBB)	mg/kg	50	N.D.	N.D.	N.D.	N.D.	N.D.	N.D.	-
Monobromodiphenyl ether (MonoBDE)	mg/kg	50	N.D.	N.D.	N.D.	N.D.	N.D.	N.D.	-
Dibromodiphenyl ether (DiBDE)	mg/kg	50	N.D.	N.D.	N.D.	N.D.	N.D.	N.D.	-
Tribromodiphenyl ether (TriBDE)	mg/kg	50	N.D.	N.D.	N.D.	N.D.	N.D.	N.D.	-
Tetrabromodiphenyl ether (TetraBDE)	mg/kg	50	N.D.	N.D.	N.D.	N.D.	N.D.	N.D.	-
Pentabromodiphenyl ether (PentaBDE)	mg/kg	50	N.D.	N.D.	N.D.	N.D.	N.D.	N.D.	-
Hexabromodiphenyl ether (HexaBDE)	mg/kg	50	N.D.	N.D.	N.D.	N.D.	N.D.	N.D.	-
Heptabromodiphenyl ether (HeptaBDE)	mg/kg	50	N.D.	N.D.	N.D.	N.D.	N.D.	N.D.	-
Octabromodiphenyl ether (OctaBDE)	mg/kg	50	N.D.	N.D.	N.D.	N.D.	N.D.	N.D.	-
Nonabromodiphenyl ether (NonaBDE)	mg/kg	50	N.D.	N.D.	N.D.	N.D.	N.D.	N.D.	-
Decabromodiphenyl ether (DecaBDE)	mg/kg	50	N.D.	N.D.	N.D.	N.D.	N.D.	N.D.	-

# TEST REPORT

Report No.: SZ1230417-19975E

Date: June 29, 2023

Page 12 of 28

Item	Unit	MDL	Result						Limit
			(2)	(24)	(33)	(43)	(56)	(67)	
sum of MonoBDE, DiBDE, TriBDE, TetraBDE, PentaBDE, HexaBDE, HeptaBDE, OctaBDE, NonaBDE, DecaBDE	mg/kg	-	/	/	/	/	/	/	1000
sum of MonoBB, DiBB, TriBB, TetraBB, PentaBB, HexaBB, HeptaBB, OctaBB, NonaBB, DecaBB	mg/kg	-	/	/	/	/	/	/	1000
<b>Conclusion</b>	/	/	<b>Pass</b>	<b>Pass</b>	<b>Pass</b>	<b>Pass</b>	<b>Pass</b>	<b>Pass</b>	/

Item	Unit	MDL	Result					Limit
			(74)	(94)	(111)	(121)	(141)	
Monobromobiphenyl (MonoBB)	mg/kg	50	N.D.	N.D.	N.D.	N.D.	N.D.	-
Dibromobiphenyl (DiBB)	mg/kg	50	N.D.	N.D.	N.D.	N.D.	N.D.	-
Tribromobiphenyl (TriBB)	mg/kg	50	N.D.	N.D.	N.D.	N.D.	N.D.	-
Tetrabromobiphenyl (TetraBB)	mg/kg	50	N.D.	N.D.	N.D.	N.D.	N.D.	-
Pentabromobiphenyl (PentaBB)	mg/kg	50	N.D.	N.D.	N.D.	N.D.	N.D.	-
Hexabromobiphenyl (HexaBB)	mg/kg	50	N.D.	N.D.	N.D.	N.D.	N.D.	-
Heptabromobiphenyl (HeptaBB)	mg/kg	50	N.D.	N.D.	N.D.	N.D.	N.D.	-
Octabromobiphenyl (OctaBB)	mg/kg	50	N.D.	N.D.	N.D.	N.D.	N.D.	-
Nonabromobiphenyl (NonaBB)	mg/kg	50	N.D.	N.D.	N.D.	N.D.	N.D.	-
Decabromobiphenyl (DecaBB)	mg/kg	50	N.D.	N.D.	N.D.	N.D.	N.D.	-
Monobromodiphenyl ether (MonoBDE)	mg/kg	50	N.D.	N.D.	N.D.	N.D.	N.D.	-
Dibromodiphenyl ether (DiBDE)	mg/kg	50	N.D.	N.D.	N.D.	N.D.	N.D.	-
Tribromodiphenyl ether (TriBDE)	mg/kg	50	N.D.	N.D.	N.D.	N.D.	N.D.	-
Tetrabromodiphenyl ether (TetraBDE)	mg/kg	50	N.D.	N.D.	N.D.	N.D.	N.D.	-
Pentabromodiphenyl ether (PentaBDE)	mg/kg	50	N.D.	N.D.	N.D.	N.D.	N.D.	-
Hexabromodiphenyl ether (HexaBDE)	mg/kg	50	N.D.	N.D.	N.D.	N.D.	N.D.	-
Heptabromodiphenyl ether (HeptaBDE)	mg/kg	50	N.D.	N.D.	N.D.	N.D.	N.D.	-

# TEST REPORT

Report No.: SZ1230417-19975E

Date: June 29, 2023

Page 13 of 28

Item	Unit	MDL	Result					Limit
			(74)	(94)	(111)	(121)	(141)	
Octabromodiphenyl ether (OctaBDE)	mg/kg	50	N.D.	N.D.	N.D.	N.D.	N.D.	-
Nonabromodiphenyl ether (NonaBDE)	mg/kg	50	N.D.	N.D.	N.D.	N.D.	N.D.	-
Decabromodiphenyl ether (DecaBDE)	mg/kg	50	N.D.	N.D.	N.D.	N.D.	N.D.	-
sum of MonoBB,DiBB,TriBB,TetraBB,PentaBB,HexaBB,HeptaBB,OctaBB,NonaBB,DecaBB	mg/kg	-	/	/	/	/	/	1000
sum of MonoBDE,DiBDE,TriBDE,TetraBDE,PentaBDE,HexaBDE,HeptaBDE,OctaBDE,NonaBDE,DecaBDE	mg/kg	-	/	/	/	/	/	1000
<b>Conclusion</b>	/	/	<b>Pass</b>	<b>Pass</b>	<b>Pass</b>	<b>Pass</b>	<b>Pass</b>	/

Item	Unit	MDL	Result				Limit
			(164)	(171)	(179)	(183)	
Monobromobiphenyl (MonoBB)	mg/kg	50	N.D.	N.D.	N.D.	N.D.	-
Dibromobiphenyl(DiBB)	mg/kg	50	N.D.	N.D.	N.D.	N.D.	-
Tribromobiphenyl(TriBB)	mg/kg	50	N.D.	N.D.	N.D.	N.D.	-
Tetrabromobiphenyl(TetraBB)	mg/kg	50	N.D.	N.D.	N.D.	N.D.	-
Pentabromobiphenyl(PentaBB)	mg/kg	50	N.D.	N.D.	N.D.	N.D.	-
Hexabromobiphenyl(HexaBB)	mg/kg	50	N.D.	N.D.	N.D.	N.D.	-
Heptabromobiphenyl (HeptaBB)	mg/kg	50	N.D.	N.D.	N.D.	N.D.	-
Octabromobiphenyl(OctaBB)	mg/kg	50	N.D.	N.D.	N.D.	N.D.	-
Nonabromobiphenyl(NonaBB)	mg/kg	50	N.D.	N.D.	N.D.	N.D.	-
Decabromobiphenyl(DecaBB)	mg/kg	50	N.D.	N.D.	N.D.	N.D.	-
Monobromodiphenyl ether (MonoBDE)	mg/kg	50	N.D.	N.D.	N.D.	N.D.	-
Dibromodiphenyl ether (DiBDE)	mg/kg	50	N.D.	N.D.	N.D.	N.D.	-
Tribromodiphenyl ether (TriBDE)	mg/kg	50	N.D.	N.D.	N.D.	N.D.	-
Tetrabromodiphenyl ether (TetraBDE)	mg/kg	50	N.D.	N.D.	N.D.	N.D.	-

Bay Area Compliance Laboratories Corp. (Shenzhen)

5F(B-West), 6F, 7F, the 3rd Phase of Wan Li Industrial Building D, Shihua Rd, Futian Free Trade Zone, Shenzhen, China

Tel: +86-755-33320018 Fax: +86-755-33320008

QB-CH-R001 (V1.0)

# TEST REPORT

Report No.: SZ1230417-19975E

Date: June 29, 2023

Page 14 of 28

Item	Unit	MDL	Result				Limit
			(164)	(171)	(179)	(183)	
Pentabromodiphenyl ether (PentaBDE)	mg/kg	50	N.D.	N.D.	N.D.	N.D.	-
Hexabromodiphenyl ether (HexaBDE)	mg/kg	50	N.D.	N.D.	N.D.	N.D.	-
Heptabromodiphenyl ether (HeptaBDE)	mg/kg	50	N.D.	N.D.	N.D.	N.D.	-
Octabromodiphenyl ether (OctaBDE)	mg/kg	50	N.D.	N.D.	N.D.	N.D.	-
Nonabromodiphenyl ether (NonaBDE)	mg/kg	50	N.D.	N.D.	N.D.	N.D.	-
Decabromodiphenyl ether (DecaBDE)	mg/kg	50	N.D.	N.D.	N.D.	N.D.	-
sum of MonoBB,DiBB,TriBB,TetraBB,PentaBB,HexaBB,HeptaBB,OctaBB,NonaBB,DecaBB	mg/kg	-	/	/	/	/	1000
sum of MonoBDE,DiBDE,TriBDE,TetraBDE,PentaBDE,HexaBDE,HeptaBDE,OctaBDE,NonaBDE,DecaBDE	mg/kg	-	/	/	/	/	1000
<b>Conclusion</b>	/	/	<b>Pass</b>	<b>Pass</b>	<b>Pass</b>	<b>Pass</b>	/

### A.3 Phthalates(DBP, BBP, DEHP, DIBP)content

Test method: IEC 62321-8:2017

Item	Unit	MDL	Result						Limit
			(2)+(51)	(3)+(6)	(5)+(28)	(7)+(8)+(9)	(10)+(11)+(12)	(13)+(14)+(15)	
Dibutyl Phthalate(DBP)	mg/kg	30	N.D.	N.D.	N.D.	N.D.	N.D.	N.D.	1000
Benzyl Butyl Phthalate(BBP)	mg/kg	30	N.D.	N.D.	N.D.	N.D.	N.D.	N.D.	1000
Bis-(2-ethylhexyl) Phthalate (DEHP)	mg/kg	30	N.D.	N.D.	N.D.	N.D.	N.D.	N.D.	1000
Diisobutyl phthalate(DIBP)	mg/kg	30	N.D.	N.D.	N.D.	N.D.	N.D.	N.D.	1000
<b>Conclusion</b>	/	/	<b>Pass</b>	<b>Pass</b>	<b>Pass</b>	<b>Pass</b>	<b>Pass</b>	<b>Pass</b>	/

# TEST REPORT

Report No.: SZ1230417-19975E

Date: June 29, 2023

Page 15 of 28

Item	Unit	MDL	Result						Limit
			(16)+(17)+(18)	(19)+(20)+(21)	(24)+(33)+(43)	(30)+(58)	(35)+(36)	(40)+(41)	
Dibutyl Phthalate(DBP)	mg/kg	30	N.D.	N.D.	N.D.	N.D.	N.D.	N.D.	1000
Benzyl Butyl Phthalate(BBP)	mg/kg	30	N.D.	N.D.	N.D.	N.D.	N.D.	N.D.	1000
Bis-(2-ethylhexyl) Phthalate (DEHP)	mg/kg	30	N.D.	N.D.	N.D.	N.D.	N.D.	N.D.	1000
Diisobutyl phthalate(DIBP)	mg/kg	30	N.D.	N.D.	N.D.	N.D.	N.D.	N.D.	1000
<b>Conclusion</b>	/	/	<b>Pass</b>	<b>Pass</b>	<b>Pass</b>	<b>Pass</b>	<b>Pass</b>	<b>Pass</b>	/

Item	Unit	MDL	Result						Limit
			(45)+(46)+(47)	(48)+(49)	(53)+(54)+(55)	(56)+(67)+(74)	(59)+(64)	(60)	
Dibutyl Phthalate(DBP)	mg/kg	30	N.D.	N.D.	N.D.	N.D.	N.D.	N.D.	1000
Benzyl Butyl Phthalate(BBP)	mg/kg	30	N.D.	N.D.	N.D.	N.D.	N.D.	N.D.	1000
Bis-(2-ethylhexyl) Phthalate (DEHP)	mg/kg	30	N.D.	N.D.	N.D.	N.D.	N.D.	N.D.	1000
Diisobutyl phthalate(DIBP)	mg/kg	30	N.D.	N.D.	N.D.	N.D.	N.D.	N.D.	1000
<b>Conclusion</b>	/	/	<b>Pass</b>	<b>Pass</b>	<b>Pass</b>	<b>Pass</b>	<b>Pass</b>	<b>Pass</b>	/

Item	Unit	MDL	Result						Limit
			(61)+(62)+(63)	(65)+(69)+(71)	(76)+(77)	(80)+(82)+(89)	(84)+(91)+(94)	(90)+(93)+(97)	
Dibutyl Phthalate(DBP)	mg/kg	30	N.D.	N.D.	N.D.	N.D.	N.D.	N.D.	1000
Benzyl Butyl Phthalate(BBP)	mg/kg	30	N.D.	N.D.	N.D.	N.D.	N.D.	N.D.	1000
Bis-(2-ethylhexyl) Phthalate (DEHP)	mg/kg	30	N.D.	N.D.	N.D.	N.D.	N.D.	N.D.	1000
Diisobutyl phthalate(DIBP)	mg/kg	30	N.D.	N.D.	N.D.	N.D.	N.D.	N.D.	1000
<b>Conclusion</b>	/	/	<b>Pass</b>	<b>Pass</b>	<b>Pass</b>	<b>Pass</b>	<b>Pass</b>	<b>Pass</b>	/

Item	Unit	MDL	Result						Limit
			(98)+(99)+(102)	(103)+(105)+(106)	(104)+(110)+(112)	(108)+(109)	(111)+(121)+(141)	(113)+(114)+(116)	
Dibutyl Phthalate(DBP)	mg/kg	30	N.D.	N.D.	N.D.	N.D.	N.D.	N.D.	1000
Benzyl Butyl Phthalate(BBP)	mg/kg	30	N.D.	N.D.	N.D.	N.D.	N.D.	N.D.	1000
Bis-(2-ethylhexyl) Phthalate (DEHP)	mg/kg	30	N.D.	N.D.	N.D.	N.D.	N.D.	N.D.	1000
Diisobutyl phthalate(DIBP)	mg/kg	30	N.D.	N.D.	N.D.	N.D.	N.D.	N.D.	1000
<b>Conclusion</b>	/	/	<b>Pass</b>	<b>Pass</b>	<b>Pass</b>	<b>Pass</b>	<b>Pass</b>	<b>Pass</b>	/

# TEST REPORT

Report No.: SZ1230417-19975E

Date: June 29, 2023

Page 16 of 28

Item	Unit	MDL	Result						Limit
			(118)+(123)+ (124)	(125)+(126)+ (127)	(128)+(129)+ (132)	(133)+(142)+ (143)	(134)+(135)+ (136)	(137)+(138)+ (140)	
Dibutyl Phthalate(DBP)	mg/kg	30	N.D.	N.D.	N.D.	N.D.	N.D.	N.D.	1000
Benzyl Butyl Phthalate(BBP)	mg/kg	30	N.D.	N.D.	N.D.	N.D.	N.D.	N.D.	1000
Bis-(2-ethylhexyl) Phthalate (DEHP)	mg/kg	30	N.D.	N.D.	N.D.	N.D.	N.D.	N.D.	1000
Diisobutyl phthalate(DIBP)	mg/kg	30	N.D.	N.D.	N.D.	N.D.	N.D.	N.D.	1000
<b>Conclusion</b>	/	/	<b>Pass</b>	<b>Pass</b>	<b>Pass</b>	<b>Pass</b>	<b>Pass</b>	<b>Pass</b>	/

Item	Unit	MDL	Result					Limit
			(145)+(146)+ (147)	(148)+(149)	(152)+(164)+ (171)	(154)+(155)	(156)+(157)+ (159)	
Dibutyl Phthalate(DBP)	mg/kg	30	N.D.	N.D.	N.D.	N.D.	N.D.	1000
Benzyl Butyl Phthalate(BBP)	mg/kg	30	N.D.	N.D.	N.D.	N.D.	N.D.	1000
Bis-(2-ethylhexyl) Phthalate (DEHP)	mg/kg	30	N.D.	N.D.	N.D.	N.D.	N.D.	1000
Diisobutyl phthalate(DIBP)	mg/kg	30	N.D.	N.D.	N.D.	N.D.	N.D.	1000
<b>Conclusion</b>	/	/	<b>Pass</b>	<b>Pass</b>	<b>Pass</b>	<b>Pass</b>	<b>Pass</b>	/

Item	Unit	MDL	Result					Limit
			(160)+(161)+ (167)	(169)+(170)+ (173)	(175)+(176)+ (177)	(179)+(183)	(181)+(182)	
Dibutyl Phthalate(DBP)	mg/kg	30	N.D.	N.D.	N.D.	N.D.	N.D.	1000
Benzyl Butyl Phthalate(BBP)	mg/kg	30	N.D.	N.D.	N.D.	N.D.	N.D.	1000
Bis-(2-ethylhexyl) Phthalate (DEHP)	mg/kg	30	N.D.	N.D.	N.D.	N.D.	N.D.	1000
Diisobutyl phthalate(DIBP)	mg/kg	30	N.D.	N.D.	N.D.	N.D.	N.D.	1000
<b>Conclusion</b>	/	/	<b>Pass</b>	<b>Pass</b>	<b>Pass</b>	<b>Pass</b>	<b>Pass</b>	/

Note:

- N.D.= Not Detected or less than MDL
- MDL = Method Detection Limit
- "+" = Composite testing.
- The Result less than MDL are not taken into account while calculating the sum contents.

\*\*\*\*\*



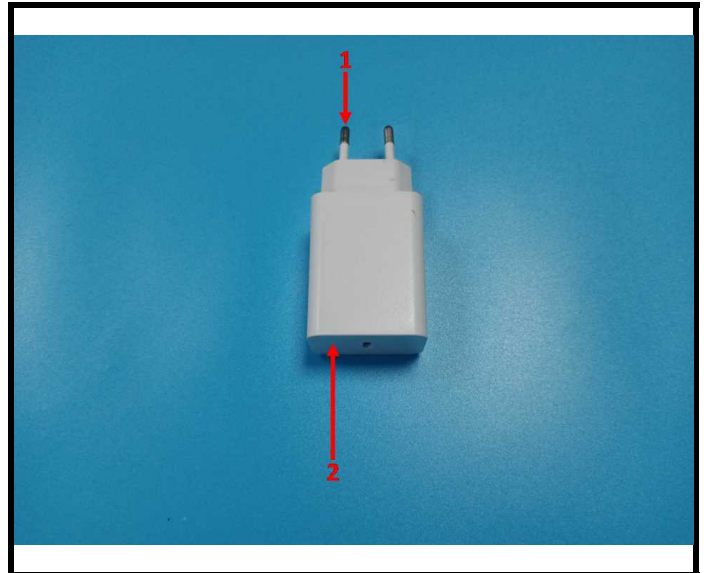
# TEST REPORT

Report No.: SZ1230417-19975E

Date: June 29, 2023

Page 17 of 28

Photograph of Sample

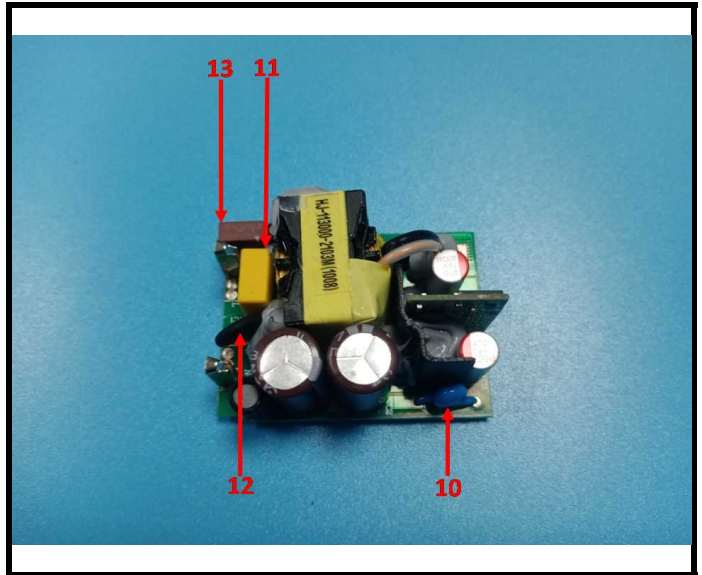
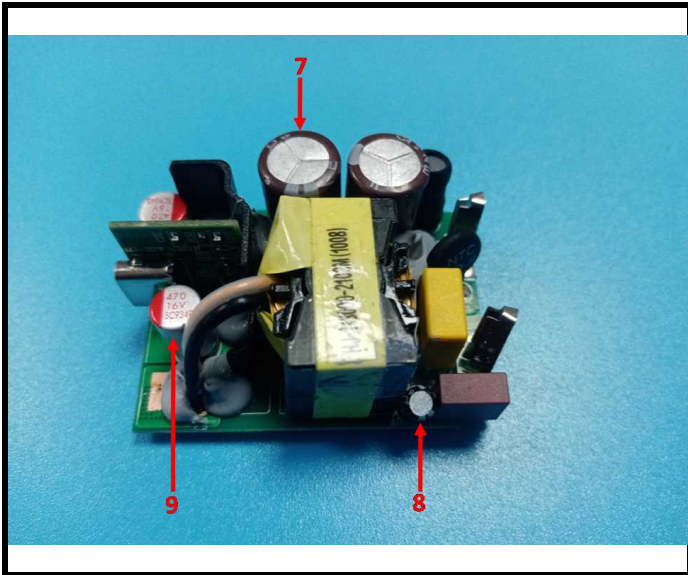
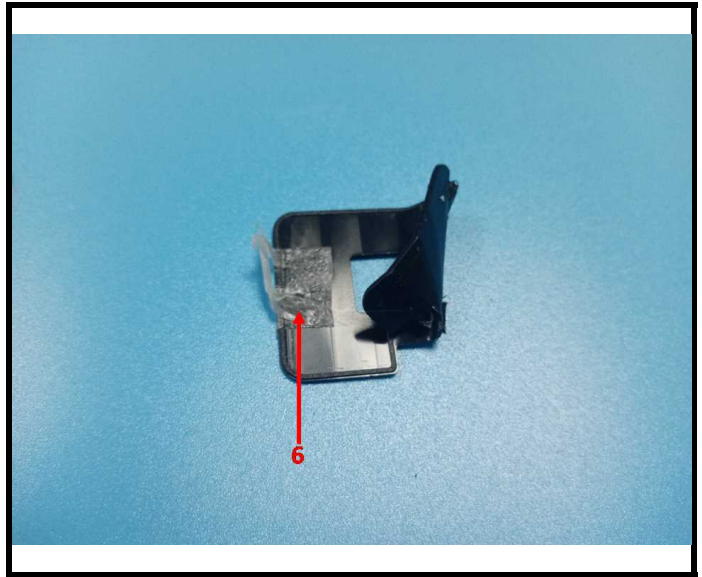
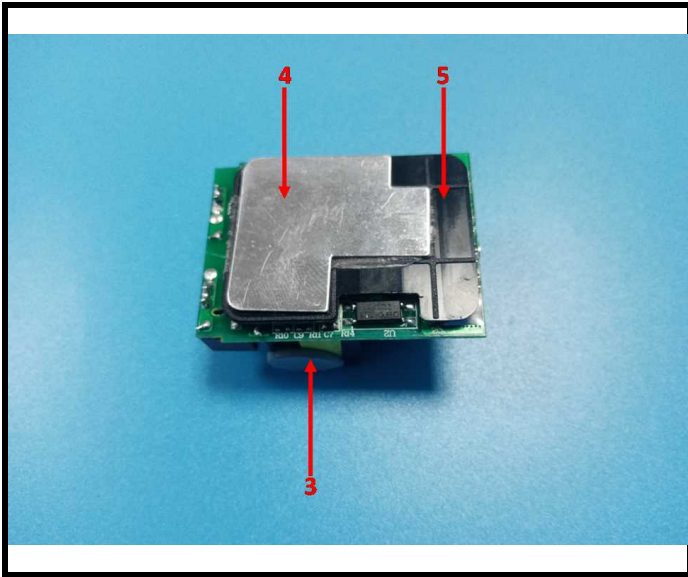


# TEST REPORT

Report No.: SZ1230417-19975E

Date: June 29, 2023

Page 18 of 28

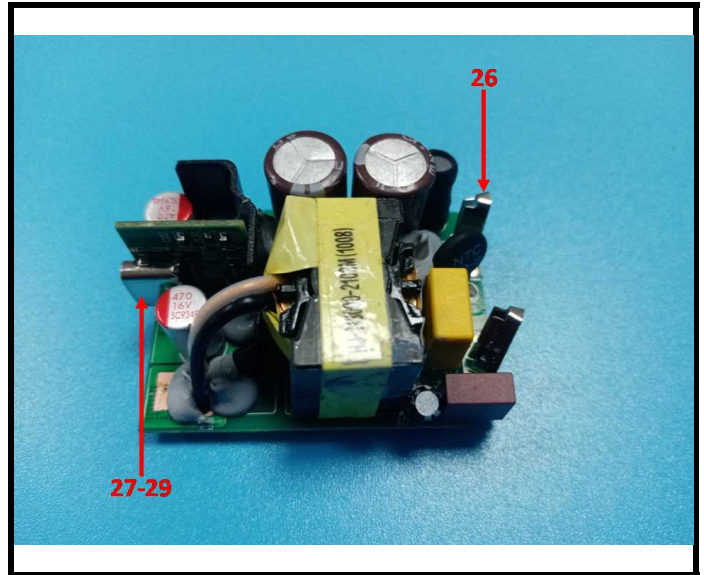
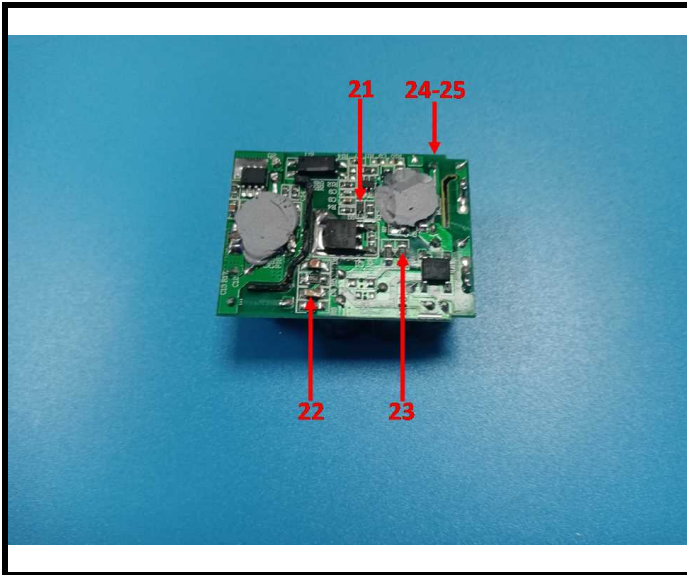
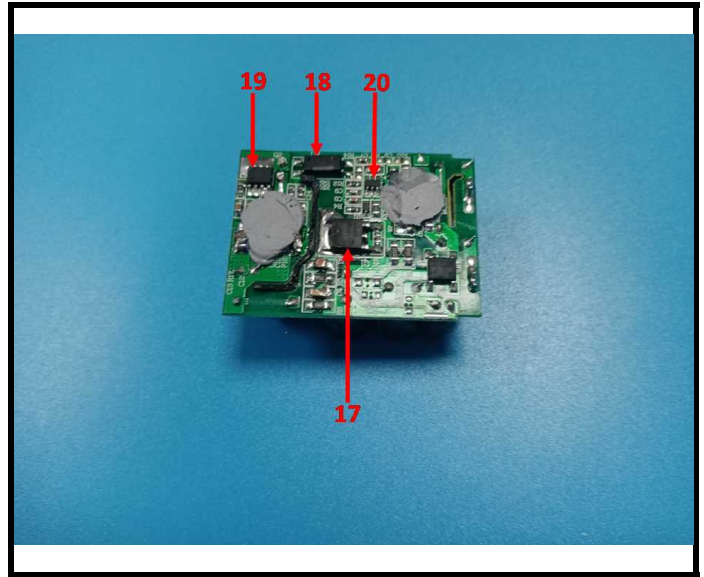
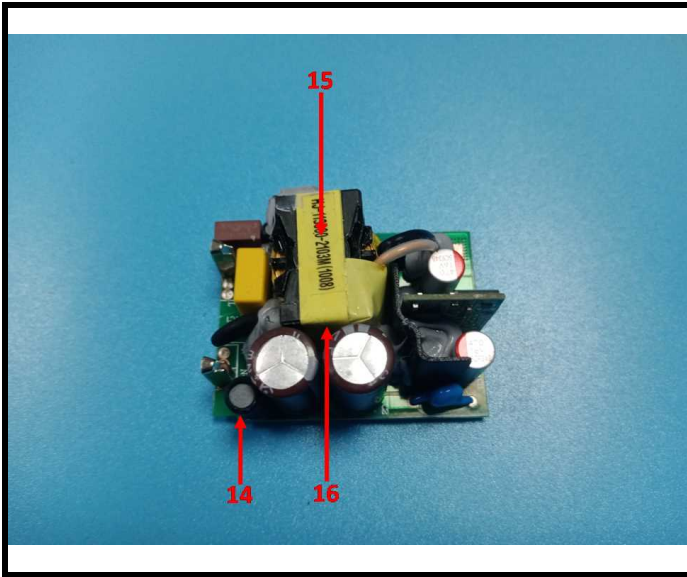


# TEST REPORT

Report No.: SZ1230417-19975E

Date: June 29, 2023

Page 19 of 28



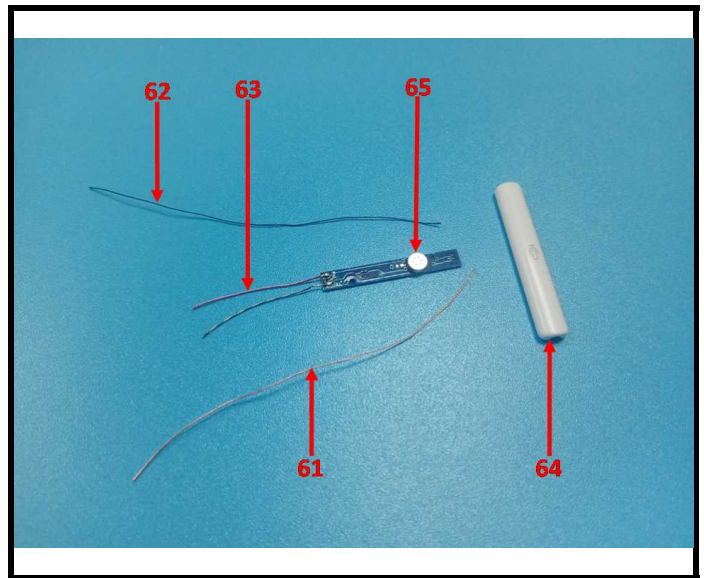
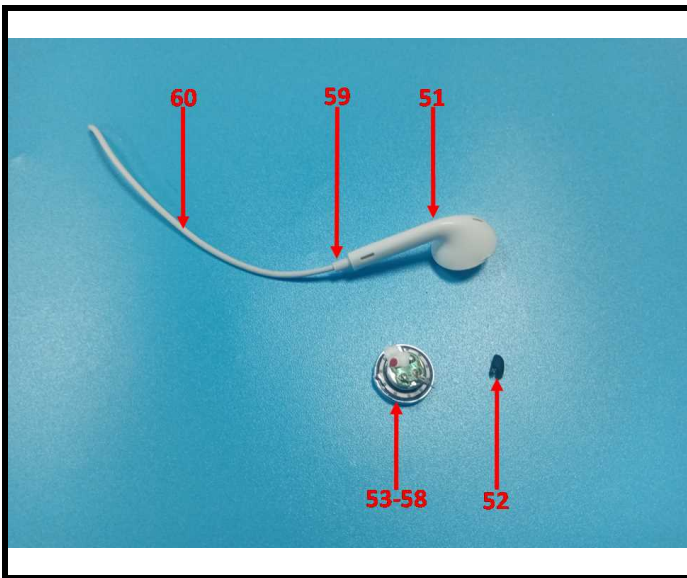
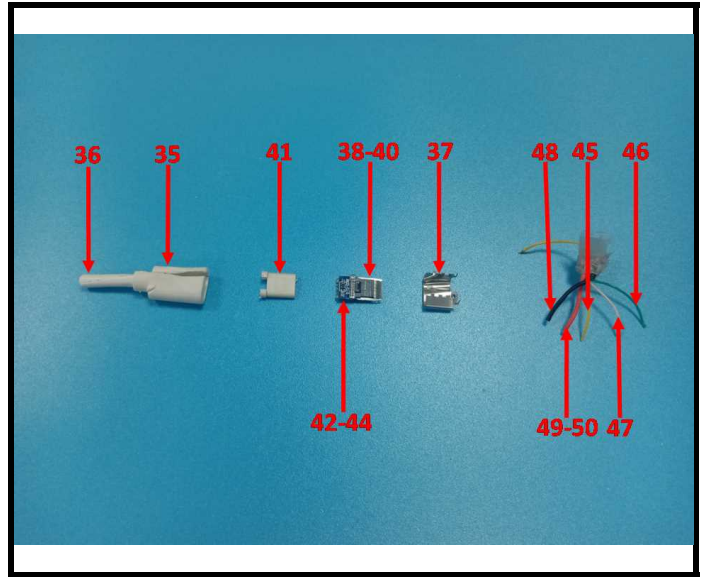
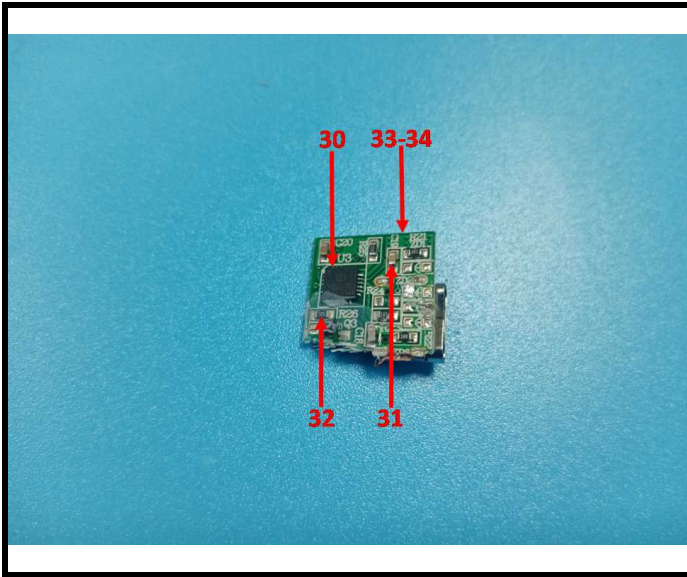


# TEST REPORT

Report No.: SZ1230417-19975E

Date: June 29, 2023

Page 20 of 28

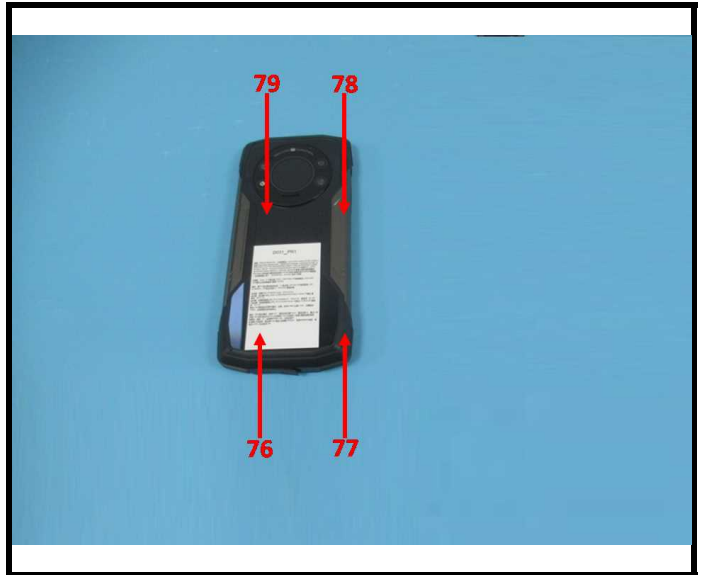
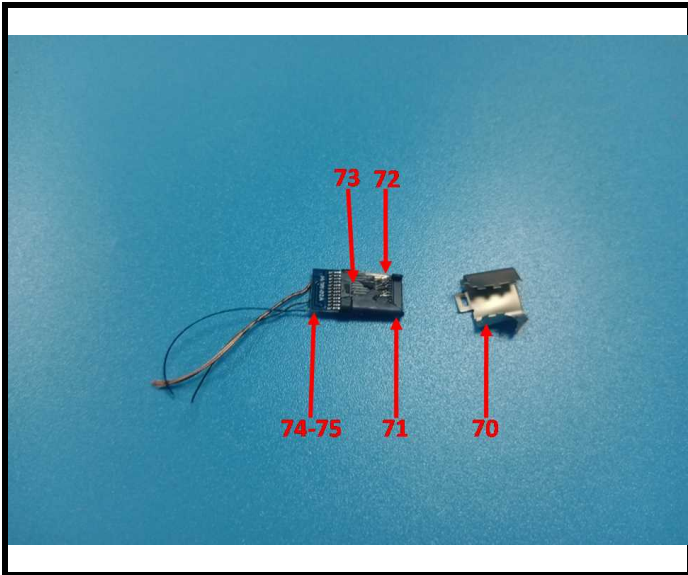
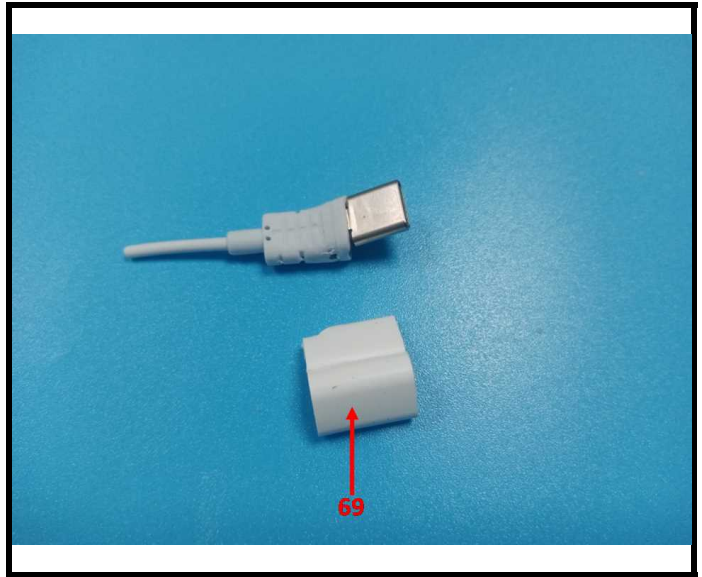
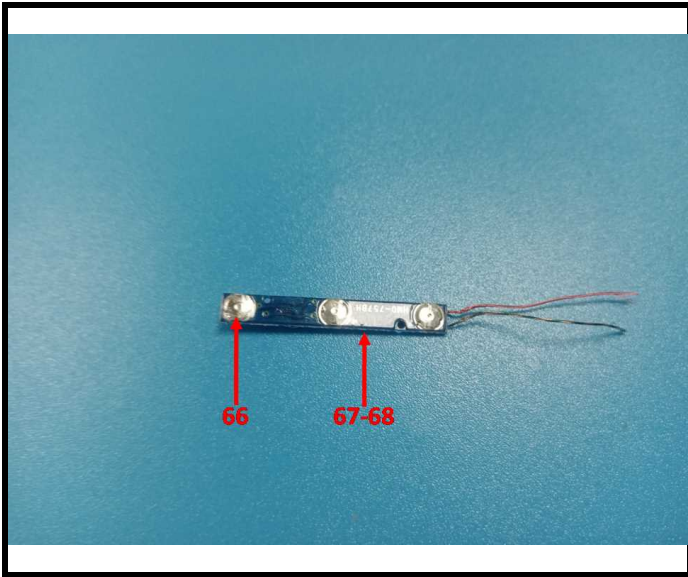


# TEST REPORT

Report No.: SZ1230417-19975E

Date: June 29, 2023

Page 21 of 28



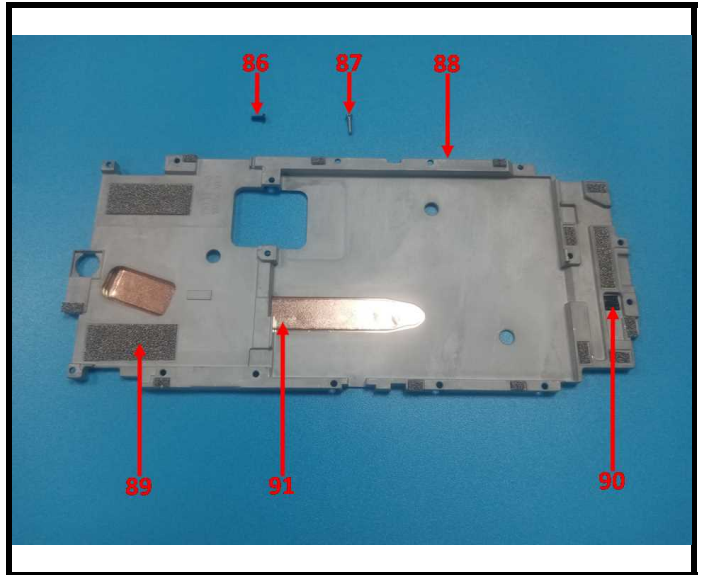
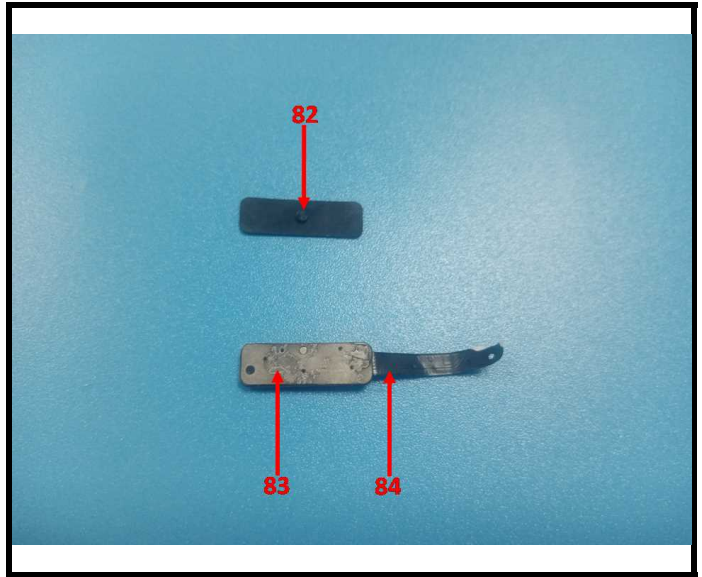


# TEST REPORT

Report No.: SZ1230417-19975E

Date: June 29, 2023

Page 22 of 28

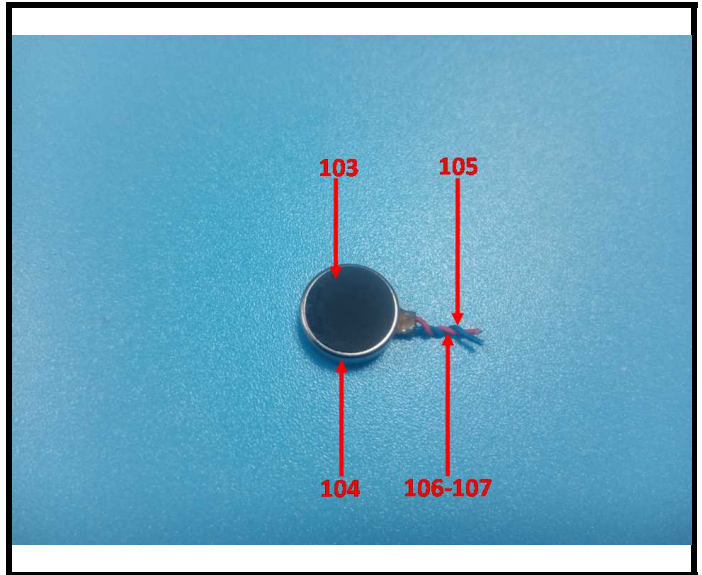
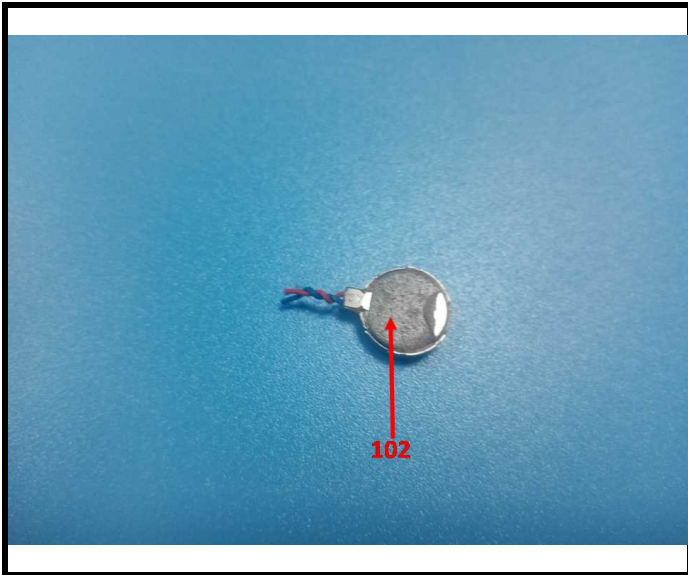
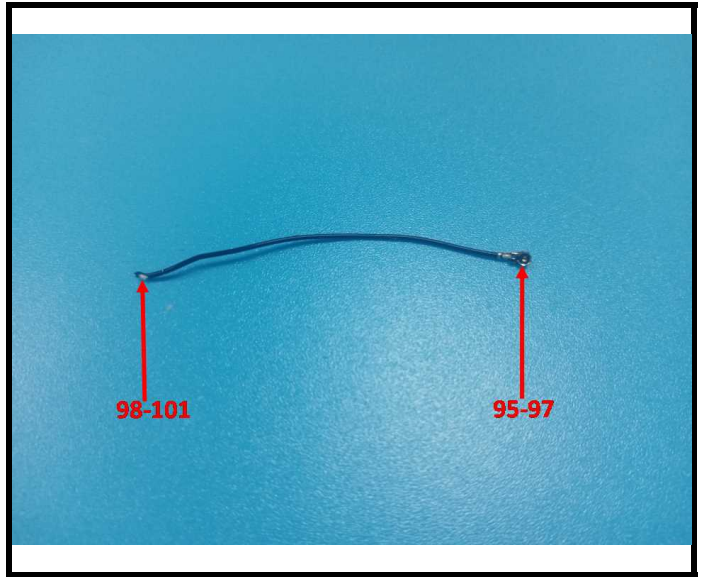
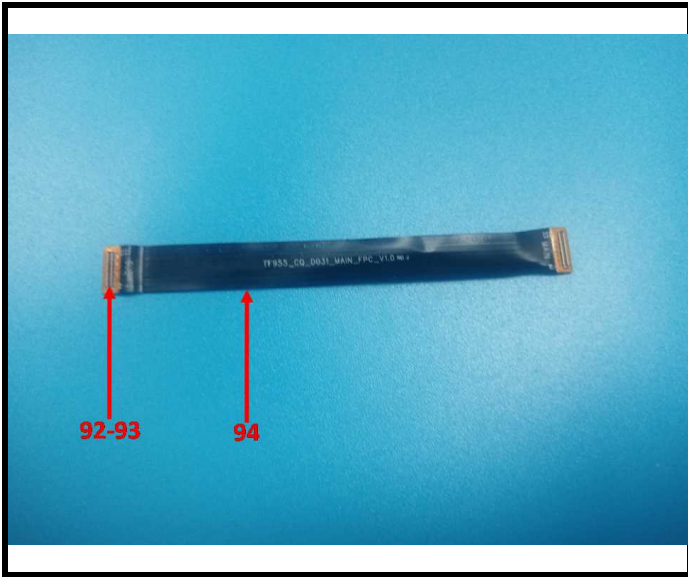


# TEST REPORT

Report No.: SZ1230417-19975E

Date: June 29, 2023

Page 23 of 28



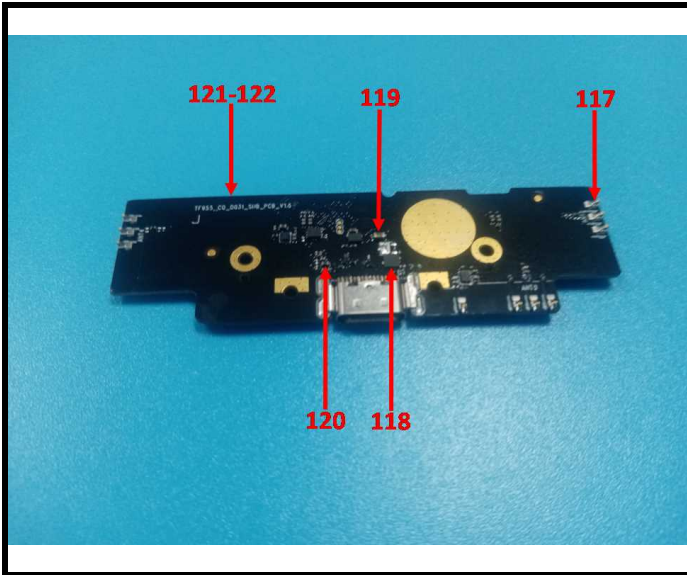
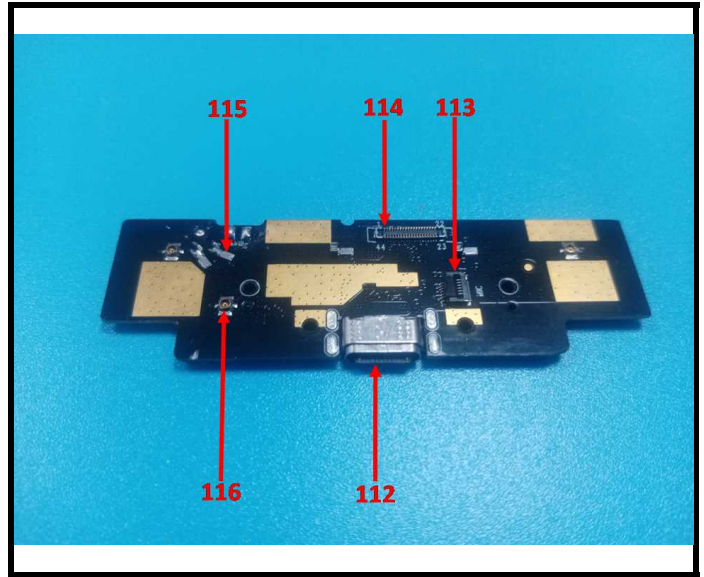
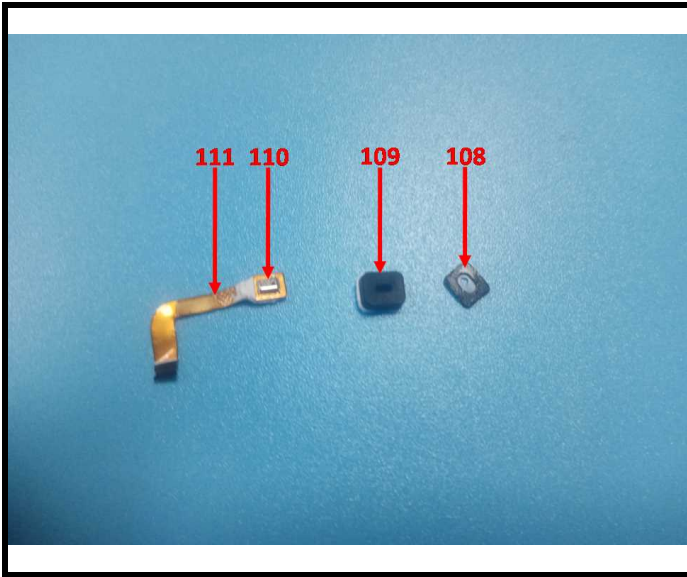


# TEST REPORT

Report No.: SZ1230417-19975E

Date: June 29, 2023

Page 24 of 28



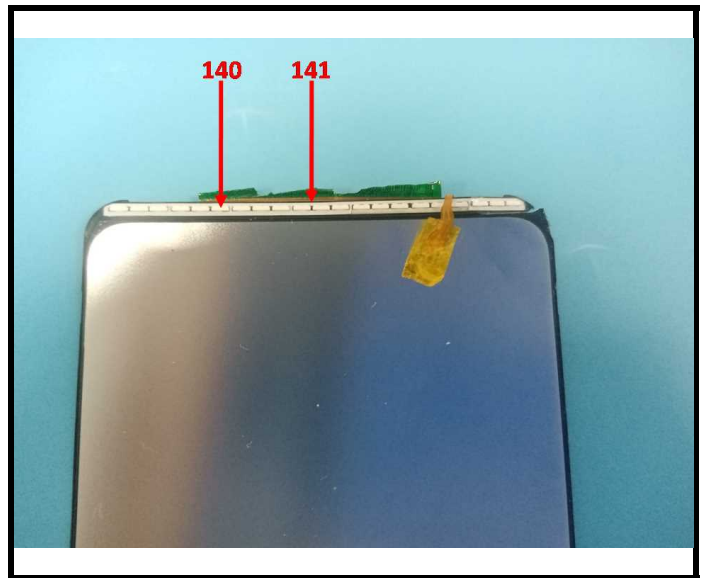
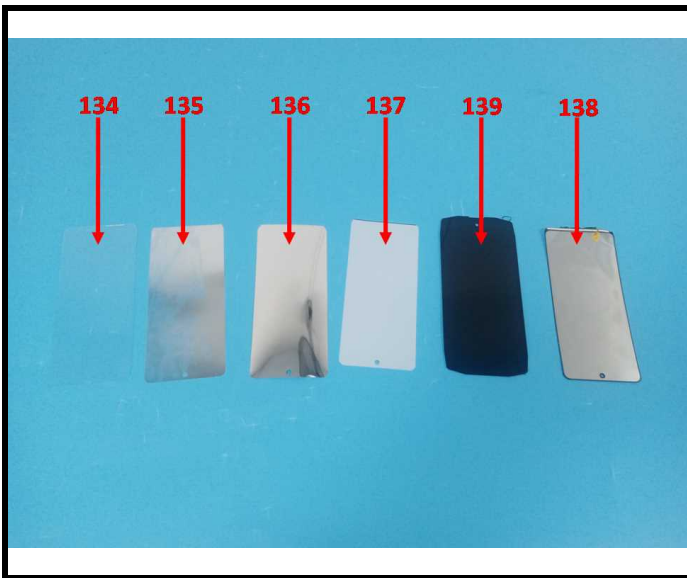
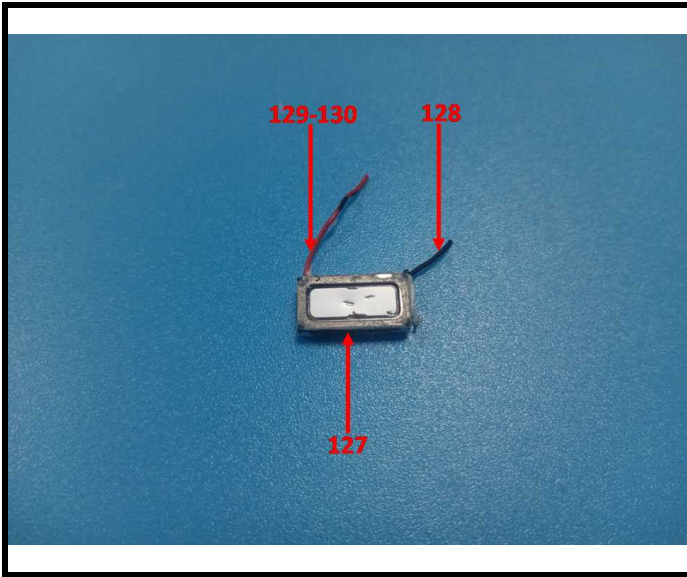


# TEST REPORT

Report No.: SZ1230417-19975E

Date: June 29, 2023

Page 25 of 28

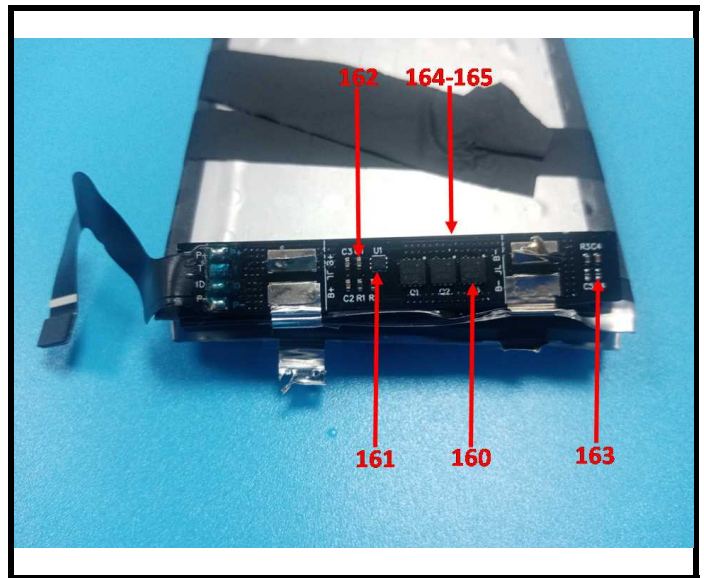
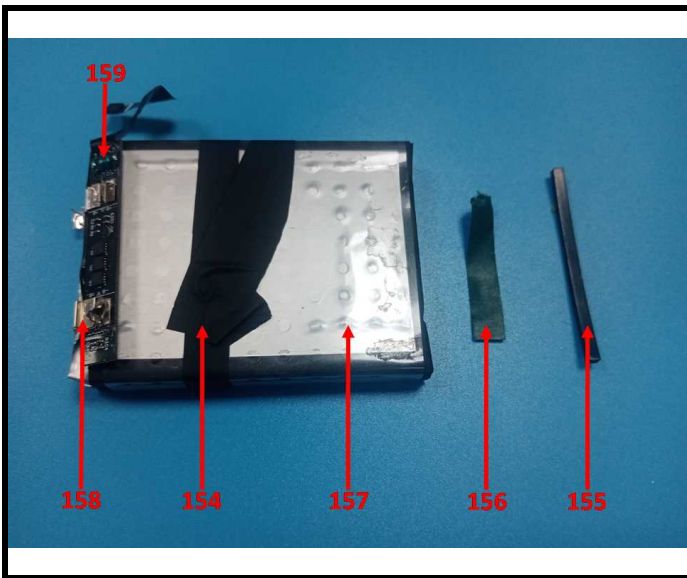
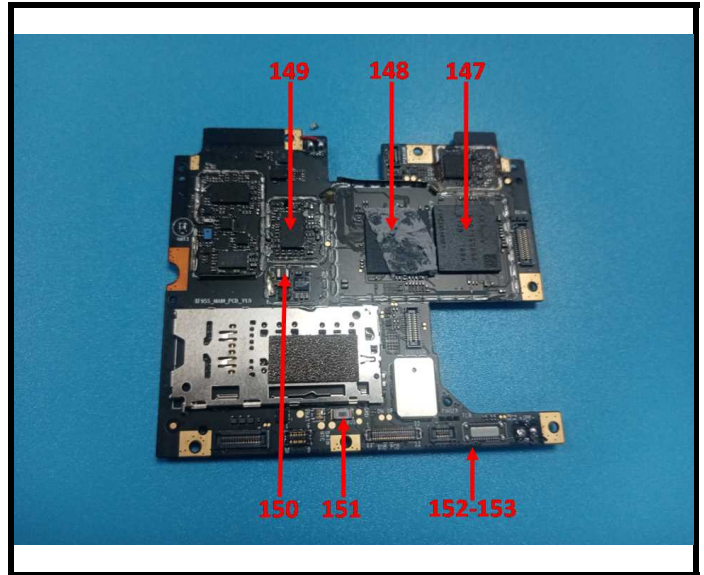
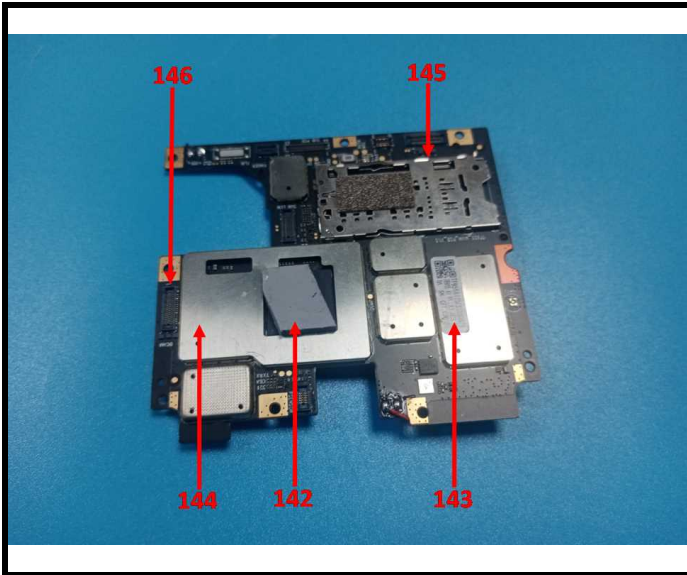


# TEST REPORT

Report No.: SZ1230417-19975E

Date: June 29, 2023

Page 26 of 28



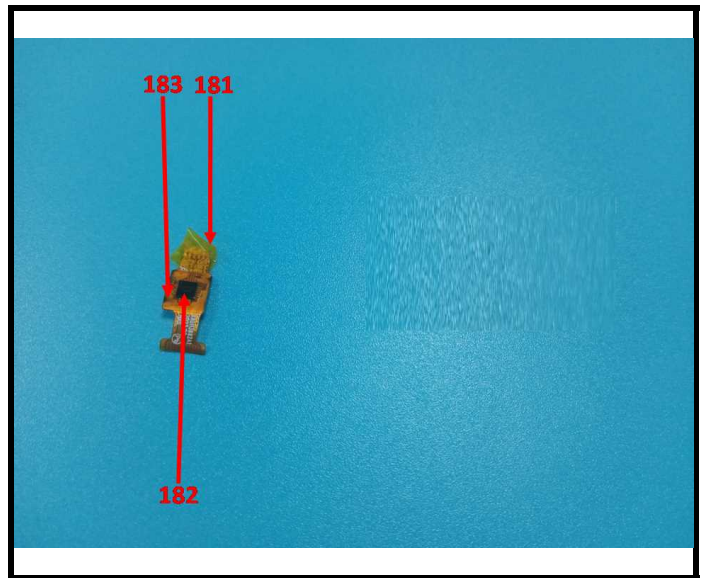
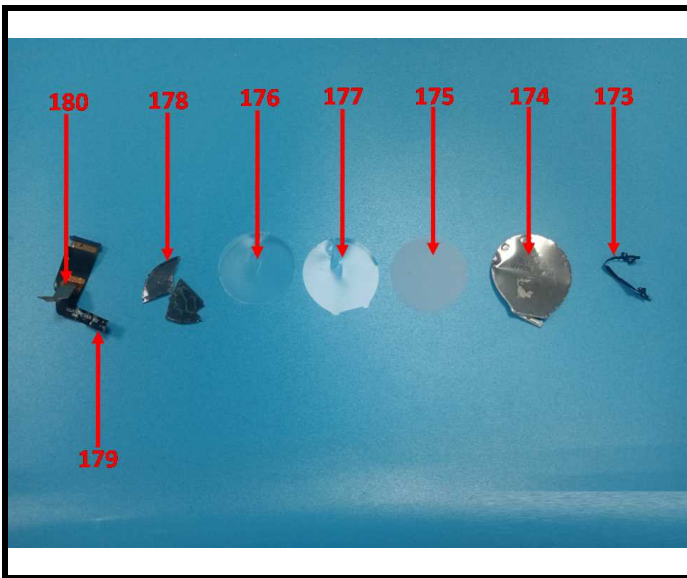
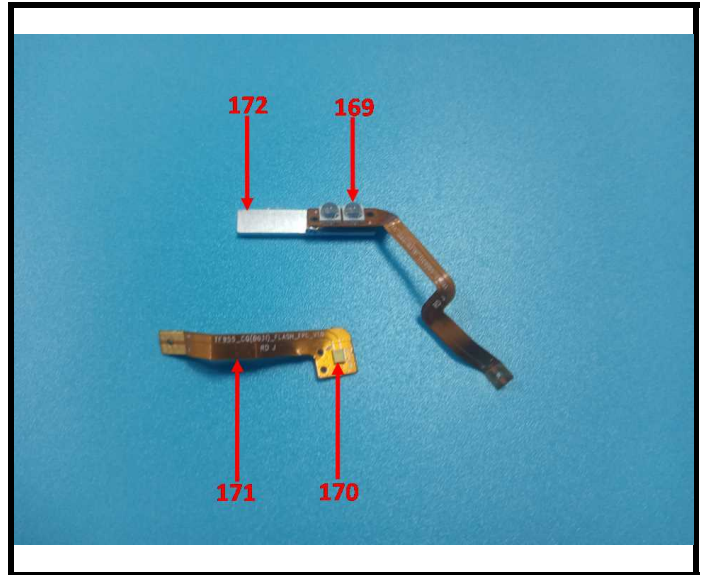
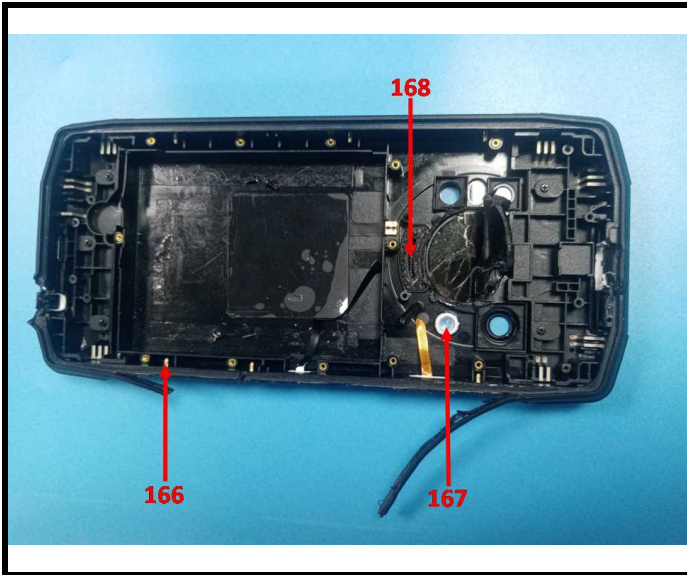


# TEST REPORT

Report No.: SZ1230417-19975E

Date: June 29, 2023

Page 27 of 28



BACL authenticate the photo on original report only

# TEST REPORT

**Report No.: SZ1230417-19975E**

Date: June 29, 2023

Page 28 of 28

Statement:

- 1.This report cannot be reproduced except in full, without prior written approval of the Company.
- 2.Unless otherwise stated the results shown in this test report refer only to the sample(s) tested and such sample(s) are retained for 30 days only.
- 3.This report is valid only with a valid digital signature. The digital signature may be available only under the Adobe software above version 7.0.
- 4.Otherwise required by the applicant or Product Regulations, Decision Rule in this report did not consider the uncertainty.
- 5.The information which provided by the applicant, such as sample description, sample name, material component, style/item No. , P.O. No. , manufacturer, age phase, the laboratory is not responsible for its authenticity and this information can affect the validity of the result in the test report.
- 6.The test samples were in good condition before testing.

\*\*\* End of Report \*\*\*